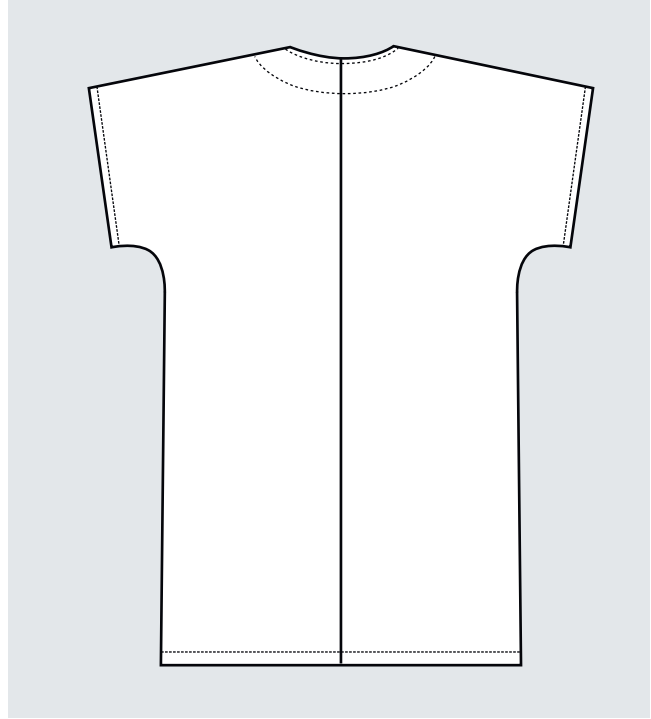
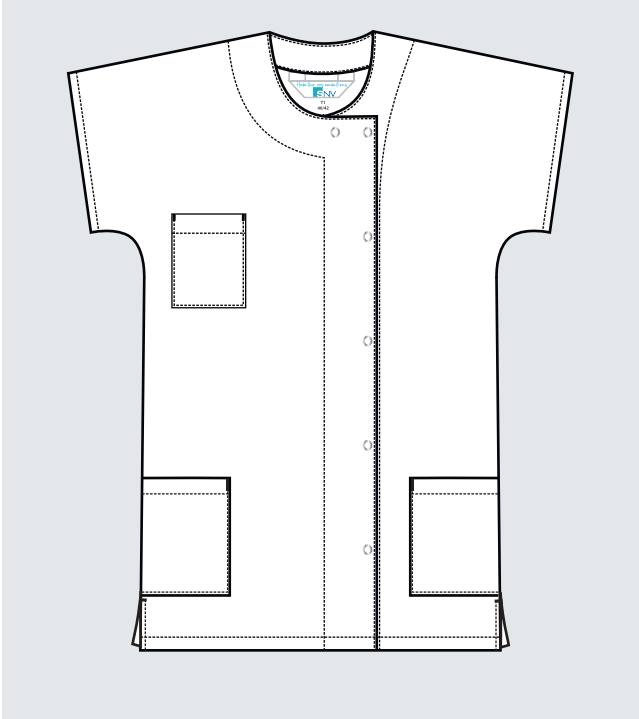


NOEMIE

65% POLYESTER
35% COTON

FEMME

CATALOGUE
19/09/2024



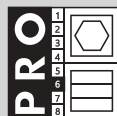
Tunique Noémie
Manches courtes kimono
1 poche poitrine côté droit
2 poches basses
Fermeture asymétrique devant par 6 pressions 11mm
Couture dos
Hauteur dos : 75 cm
Taille 0 à Taille 6

65% Polyester 35% Coton 200 gr/m²



Noir
TNECP00001

65% Polyester 35% Coton 215 gr/m²



Blanc
TNECP00000

